

# BONALDO

## Artika

Designer: Gino Carollo

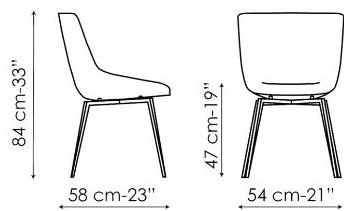


Trattodistintivodella sedia Artika ben evidente frontalmente è lo schienale che costituisce un tutt'uno con la seduta e si apre verso l'alto conferendo un'idea di espansione e ampiezza. Artika è una sedia imbottita in pelle o tessuto modellata con linee dinamiche e comode, formerigorose e solide, secondo armoniose proporzioni e soluzioni strutturali di forte impatto. La seduta è rivestita in pelle, ecopelle o tessuto materialisceltiper durare a lungo e per garantire massima versatilità di utilizzo e numerose possibilità di abbinamento cromatici. La parte inferiore

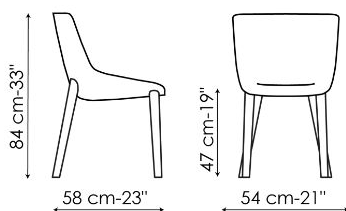
in metallo è realizzata con le classiche quattro gambe oppure un'originale base a slitta (Artikasi); per entrambe le soluzioni è possibile scegliere tra le numerose cromie di metallo verniciato oppure raffinate finiture. In alternativa si può optare per la variante con gambe in legno (ArtikaWood) o completamente rivestita. Disponibili anche le versioni con braccioli (Miss Artika, Miss Artikasi, Miss ArtikaWood) e la versione sgabello (Artika too, ArtikaWood too).



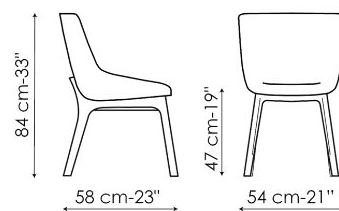
# Scheda tecnica



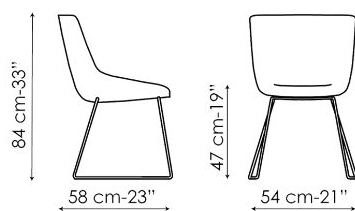
Artika  
Larghezza 54cm  
Profondità 58cm  
Altezza 84cm



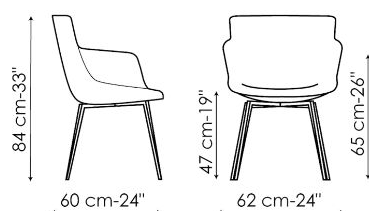
Artikacovered  
Larghezza 54cm  
Profondità 58cm  
Altezza 84cm



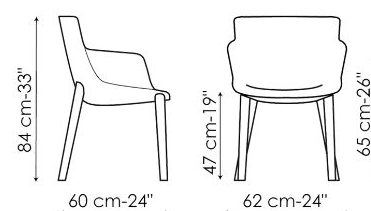
ArtikaWood  
Larghezza 54cm  
Profondità 58cm  
Altezza 84cm



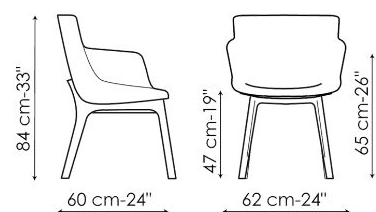
Artikasi  
Larghezza 54cm  
Profondità 58cm  
Altezza 84cm



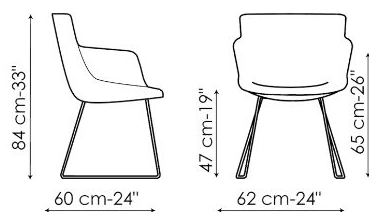
Miss Artika  
Larghezza 62cm  
Profondità 60cm  
Altezza 84cm



Miss Artikacovered  
Larghezza 62cm  
Profondità 60cm  
Altezza 84cm



Miss ArtikaWood  
Larghezza 62cm  
Profondità 60cm  
Altezza 84cm



Miss Artikasi  
Larghezza 62cm  
Profondità 60cm  
Altezza 84cm

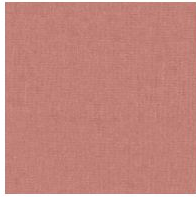
# Finishes

## RIVESTIMENTO

Tessuto - 900



Tessuto - Azimut  
9B02



Tessuto - Azimut  
9B08



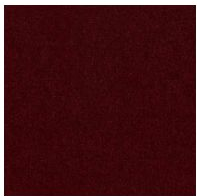
Tessuto - Azimut  
9B17



Tessuto - Azimut  
9B22



Tessuto - Azimut  
9B26



Tessuto - Azimut  
9B36



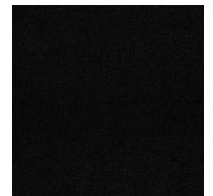
Tessuto - Azimut  
9B39



Tessuto - Azimut  
9B42



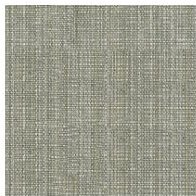
Tessuto - Azimut  
9B44



Tessuto - Azimut  
9B48



Fabric - Newco  
9B65



Fabric - Newco  
9B66



Fabric - Newco  
9B67



Fabric - Newco  
9B68



Fabric - Newco  
9B69



Fabric - Newco  
9B70



Fabric - Newco  
9B71



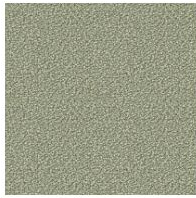
Fabric - Newco  
9B72

Tessuto - Must

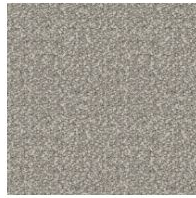




Tessuto - Boemian  
MC40



Tessuto - Boemian  
MC43



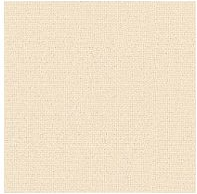
Tessuto - Boemian  
MC46



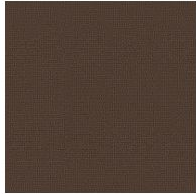
Tessuto - Boemian  
MC47



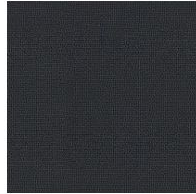
Tessuto - Boemian  
MC49



Tessuto - Rico  
MA02



Tessuto - Rico  
MA04



Tessuto - Rico  
MA07



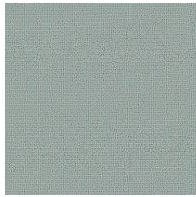
Tessuto - Rico  
MA09



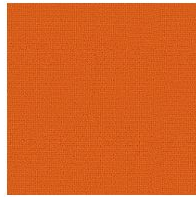
Tessuto - Rico  
MA11



Tessuto - Rico  
MA20



Tessuto - Rico  
MA22



Tessuto - Rico  
MC39



Tessuto - St. Moritz  
MC60



Tessuto - St. Moritz  
MC61



Tessuto - St. Moritz  
MC62



Tessuto - St. Moritz  
MC67



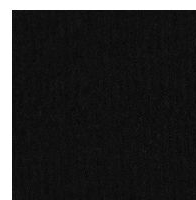
Tessuto - St. Moritz  
MC69



Tessuto - St. Moritz  
MC76



Tessuto - St. Moritz  
MC81



Tessuto - St. Moritz  
MC83

Tessuto - St. Moritz  
MC85



Tessuto - Flora  
MD30



Tessuto - Flora  
MD31



Tessuto - Flora  
MD32



Tessuto - Flora  
MD34



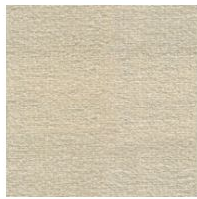
Tessuto - Flora  
MD35



Tessuto - Flora  
MD37



Tessuto - Flora  
MD39



Fabric - Lucky  
MD58



Fabric - Lucky  
MD59



Fabric - Lucky  
MD60



Fabric - Lucky  
MD61

Tessuto - Special



Tessuto - Baia  
SP45



Tessuto - Baia  
SP48



Tessuto - Baia  
SP50



Tessuto - Baia  
SP51



Tessuto - Baia  
SP52



Fabric - Jurga  
SP53



Fabric - Jurga  
SP54



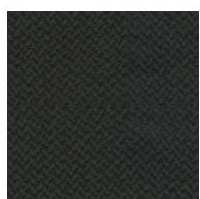
Fabric - Jurga  
SP55



Fabric - Jurga  
SP56



Fabric - Jurga  
SP57



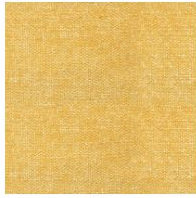
Fabric - Jurga  
SP58



Tessuto - 800



Tessuto- Pastello  
8D69



Fabric - Pastello  
8D68



Fabric - Pastello  
8D67



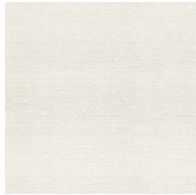
Fabric - Pastello  
8D66



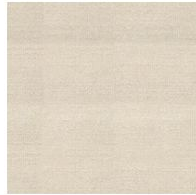
Fabric - Pastello  
8D65



Fabric - Pastello  
8D64



Fabric - Pastello  
8D63



Fabric - Pastello  
8D62



Fabric - Pastello  
8D61



Fabric - Pastello  
8D60



Fabric - Pastello  
8D59



Fabric - Pastello  
8D58



Fabric - Pastello  
8D57



Fabric - Pastello  
8D56



Fabric - Pastello  
8D55



Fabric - Pastello  
8D54



Fabric - Pastello  
8D53



Fabric - Pastello  
8D52

Tessuto - Class



Fabric - Hyle  
EB55



Fabric - Hyle  
EB56



Fabric - Hyle  
EB57



Fabric - Hyle  
EB58



Fabric - Hyle  
EB59



Fabric - Hyle  
EB60



Fabric - Hyle  
EB61



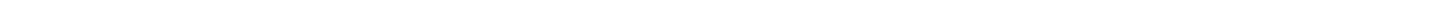
Fabric - Hyle  
EB62



Fabric - Hyle  
EB63



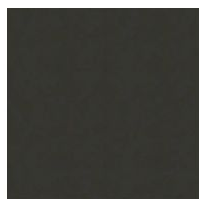
Fabric - Hyle  
EB64



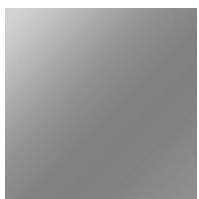


# GAMBE

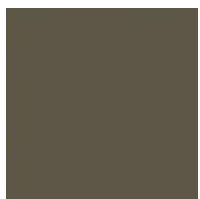
## MetalloSpecial



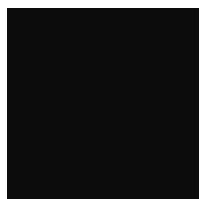
Metallofinitura  
Brunito



Metallofinitura  
Clouded chrome

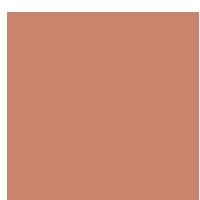


Metallofinitura  
Brown nickel



Metallofinitura  
Dark nickel

## MetalloPlus



Metalloverniciato  
Rame opaco



Metalloverniciato  
Ottone opaco



Metalloverniciato  
Bronzo opaco

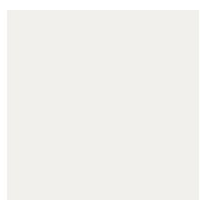


Metalloverniciato  
Piombo opaco

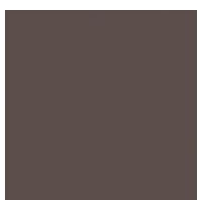


Metalloverniciato  
Oro perlato opaco

## Metallo



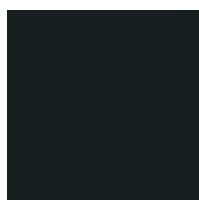
Metalloverniciato  
Bianco opaco



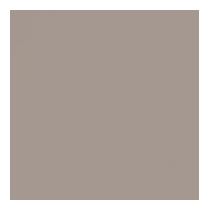
Metalloverniciato  
Marrone opaco



Metalloverniciato  
Supreme anthracite



Metalloverniciato  
Nero opaco



Metalloverniciato  
Tortora opaco

# GAMBE - ARTIKA WOOD, MISS ARTIKA WOOD

Legno



Legno massello  
Frassino color noce



Legno massello  
Frassino naturale



Legno massello  
Frassino carbone

---

Materialş fabrics leathersş colors and finishes are approximate and may slightly differ from actual ones. You can find the complete collection of Bonaldo fabrics and leathers on the website <https://www.bonaldo.biz/>