

BONALDO

Agea

Designer: Marconato e Zappa

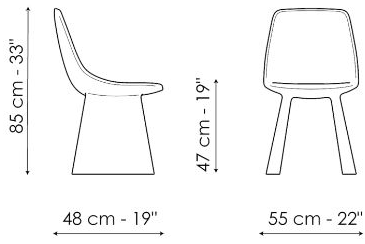


La sedia imbottita Agea, è contraddistinta dalle importanti gambe che si radicano a terra come se volessero lasciare il segno nello spazio in cui sono collocate. Come due contrafforti, le gambe sostengono la scocca imbottita e donano stabilità e charme e allo

stesso tempo essenzialità alla seduta. Scocca e gambe sono rivestite da un unico materiale in pelle, ecopelle o tessuto che rafforza l'immagine della sedia Agea che si inserisce nelle sedie da cucina e soggiorno moderne imbottite.



Scheda tecnica



Agea

Larghezza 55cm

Profondità 48cm

Altezza 85cm

Finishes

RIVESTIMENTO

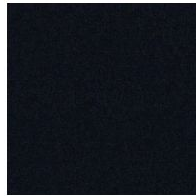
Tessuto - 900



Tessuto - Azimut
9B02



Tessuto - Azimut
9B08



Tessuto - Azimut
9B17



Tessuto - Azimut
9B22



Tessuto - Azimut
9B26



Tessuto - Azimut
9B36



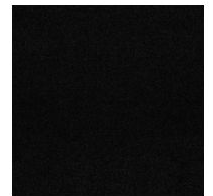
Tessuto - Azimut
9B39



Tessuto - Azimut
9B42



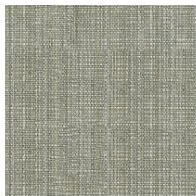
Tessuto - Azimut
9B44



Tessuto - Azimut
9B48



Fabric - Newco
9B65



Fabric - Newco
9B66



Fabric - Newco
9B67



Fabric - Newco
9B68



Fabric - Newco
9B69



Fabric - Newco
9B70



Fabric - Newco
9B71

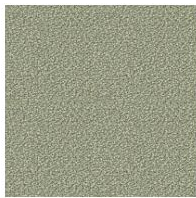


Fabric - Newco
9B72

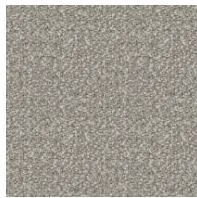
Tessuto - Must



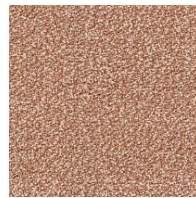
Tessuto - Boemian
MC40



Tessuto - Boemian
MC43



Tessuto - Boemian
MC46



Tessuto - Boemian
MC47



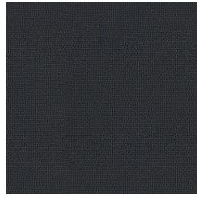
Tessuto - Boemian
MC49



Tessuto - Rico
MA02



Tessuto - Rico
MA04



Tessuto - Rico
MA07



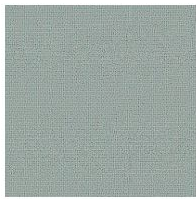
Tessuto - Rico
MA09



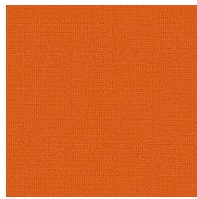
Tessuto - Rico
MA11



Tessuto - Rico
MA20



Tessuto - Rico
MA22



Tessuto - Rico
MC39



Tessuto - St. Moritz
MC60



Tessuto - St. Moritz
MC61



Tessuto - St. Moritz
MC62



Tessuto - St. Moritz
MC67



Tessuto - St. Moritz
MC69



Tessuto - St. Moritz
MC76



Tessuto - St. Moritz
MC81



Tessuto - St. Moritz



Tessuto - St. Moritz

MC83

MC85



Tessuto - Flora
MD30



Tessuto - Flora
MD31



Tessuto - Flora
MD32



Tessuto - Flora
MD34



Tessuto - Flora
MD35



Tessuto - Flora
MD37



Tessuto - Flora
MD39



Fabric - Lucky
MD58



Fabric - Lucky
MD59



Fabric - Lucky
MD60



Fabric - Lucky
MD61

Tessuto - Special



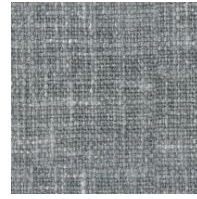
Tessuto - Baia
SP45



Tessuto - Baia
SP48



Tessuto - Baia
SP50



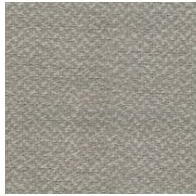
Tessuto - Baia
SP51



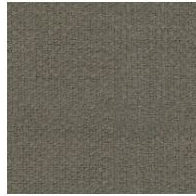
Tessuto - Baia
SP52



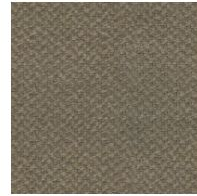
Fabric - Jurga
SP53



Fabric - Jurga
SP54



Fabric - Jurga
SP55



Fabric - Jurga
SP56



Fabric - Jurga
SP57



Fabric - Jurga
SP58



Tessuto- Pastello
8D69



Fabric- Pastello
8D68



Fabric- Pastello
8D67



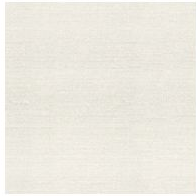
Fabric- Pastello
8D66



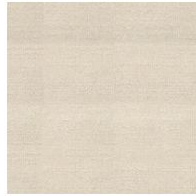
Fabric- Pastello
8D65



Fabric- Pastello
8D64



Fabric- Pastello
8D63



Fabric- Pastello
8D62



Fabric- Pastello
8D61



Fabric- Pastello
8D60



Fabric- Pastello
8D59



Fabric- Pastello
8D58



Fabric- Pastello
8D57



Fabric- Pastello
8D56



Fabric- Pastello
8D55



Fabric- Pastello
8D54



Fabric- Pastello
8D53



Fabric- Pastello
8D52



Fabric - Hyle
EB55



Fabric - Hyle
EB56



Fabric - Hyle
EB57



Fabric - Hyle
EB58



Fabric - Hyle
EB59



Fabric - Hyle
EB60



Fabric - Hyle
EB61



Fabric - Hyle
EB62



Fabric - Hyle
EB63



Fabric - Hyle
EB64

Materials, fabrics, leathers, colors and finishes are approximate and may slightly differ from actual ones. You can find the complete collection of Bonaldo fabrics and leathers on the website <https://www.bonaldobiz/>

