

BONALDO

Colibrì chair

Designer: Fabrice Berrux

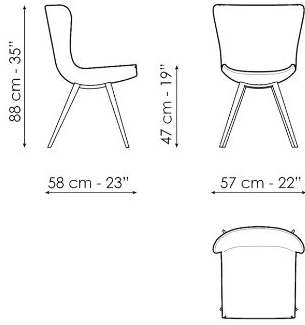


Ideale per l'area dining Colibrì chair è la sedia di design imbottita che rinnova l'equilibrio tra le partecche contraddistingue la versione poltrona Colibrì. La sottile struttura metallica della base mette in risalto il volume accogliente della seduta-schienale un grande "guscio" dai bordi rialzati e dalle proporzioni generose

che offre un "comfort senza gravità", dando corpo all'immagine essenziale da cui scaturisce il progetto di Fabrice Berrux. La lavorazione della superficie imbottita mette in evidenza il dettaglio delle cuciture in parallelo tracciate su tutta la lunghezza del rivestimento.



Scheda tecnica



Colibri chair

Larghezza 58cm

Profondità 57cm

Altezza 88cm

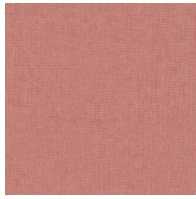
Finishes

RIVESTIMENTO

Tessuto - 900



Tessuto - Azimut
9B02



Tessuto - Azimut
9B08



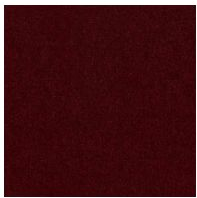
Tessuto - Azimut
9B17



Tessuto - Azimut
9B22



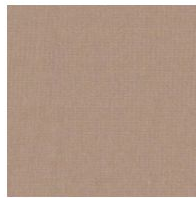
Tessuto - Azimut
9B26



Tessuto - Azimut
9B36



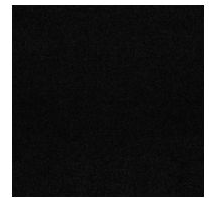
Tessuto - Azimut
9B39



Tessuto - Azimut
9B42



Tessuto - Azimut
9B44

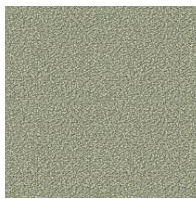


Tessuto - Azimut
9B48

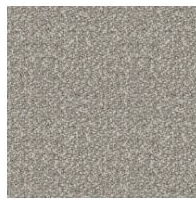
Tessuto - Must



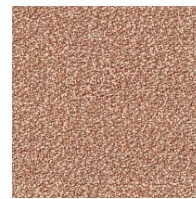
Tessuto - Boemian
MC40



Tessuto - Boemian
MC43



Tessuto - Boemian
MC46



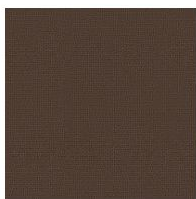
Tessuto - Boemian
MC47



Tessuto - Boemian
MC49



Tessuto - Rico
MA02



Tessuto - Rico
MA04



Tessuto - Rico
MA07



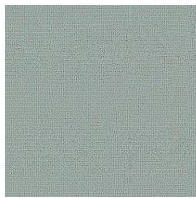
Tessuto - Rico
MA09



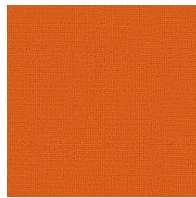
Tessuto - Rico
MA11



Tessuto- Rico
MA20



Tessuto- Rico
MA22



Tessuto- Rico
MC39



Tessuto- St. Moritz
MC60



Tessuto- St. Moritz
MC61



Tessuto- St. Moritz
MC62



Tessuto- St. Moritz
MC67



Tessuto- St. Moritz
MC69



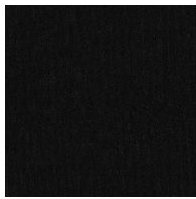
Tessuto- St. Moritz
MC76



Tessuto- St. Moritz
MC81



Tessuto- St. Moritz
MC83



Tessuto- St. Moritz
MC85



Tessuto- Flora
MD30



Tessuto- Flora
MD31



Tessuto- Flora
MD32



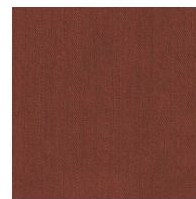
Tessuto- Flora
MD34



Tessuto- Flora
MD35



Tessuto- Flora
MD37



Tessuto- Flora
MD39

Tessuto Special



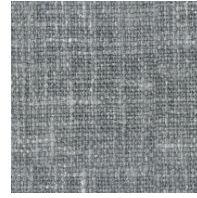
Tessuto - Baia
SP45



Tessuto - Baia
SP48



Tessuto - Baia
SP50



Tessuto - Baia
SP51



Tessuto - Baia
SP52

GAMBE

MetalloSpecial



Metallofinitura
Brunito

MetalloPlus



Metalloverniciato
Rame opaco



Metalloverniciato
Ottone opaco



Metalloverniciato
Bronzo opaco



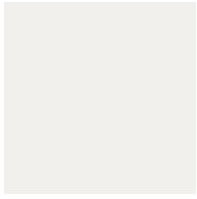
Metalloverniciato
Piombo opaco



Metalloverniciato
Oro perlato opaco

Metallo

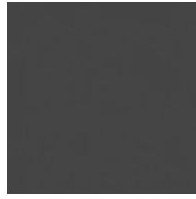
metallo



Metalloverniciato
Bianco opaco



Metalloverniciato
Marrone opaco



Metalloverniciato
Supreme anthracite



Metalloverniciato
Nero opaco



Metalloverniciato
Tortora opaco



Tessuto- Pastello
8D69



Fabric - Pastello
8D68



Fabric - Pastello
8D67



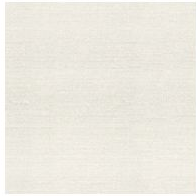
Fabric - Pastello
8D66



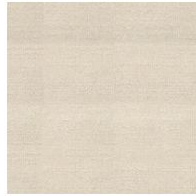
Fabric - Pastello
8D65



Fabric - Pastello
8D64



Fabric - Pastello
8D63



Fabric - Pastello
8D62



Fabric - Pastello
8D61



Fabric - Pastello
8D60



Fabric - Pastello
8D59



Fabric - Pastello
8D58



Fabric - Pastello
8D57



Fabric - Pastello
8D56



Fabric - Pastello
8D55



Fabric - Pastello
8D54



Fabric - Pastello
8D53



Fabric - Pastello
8D52



Fabric - Newco
9B65



Fabric - Newco
9B66



Fabric - Newco
9B67



Fabric - Newco
9B68



Fabric - Newco
9B69



Fabric - Newco
9B70



Fabric - Newco
9B71



Fabric - Newco
9B72

Tessuto - Must



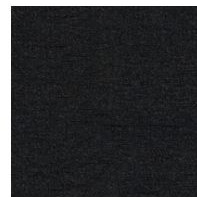
Fabric - Lucky
MD58



Fabric - Lucky
MD59



Fabric - Lucky
MD60

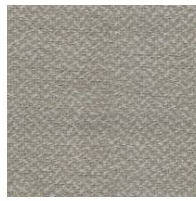


Fabric - Lucky
MD61

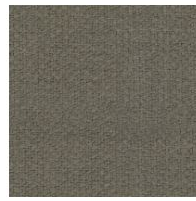
Tessuto - Special



Fabric - Jurga
SP53



Fabric - Jurga
SP54



Fabric - Jurga
SP55



Fabric - Jurga
SP56



Fabric - Jurga
SP57



Fabric - Jurga
SP58

Tessuto - Class



Fabric - Hyle
EB55



Fabric - Hyle
EB56



Fabric - Hyle
EB57



Fabric - Hyle
EB58



Fabric - Hyle
EB59



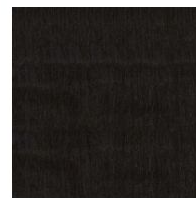
Fabric - Hyle
EB60



Fabric - Hyle
EB61



Fabric - Hyle
EB62



Fabric - Hyle
EB63



Fabric - Hyle
EB64

