

BONALDO

Joy

Designer: Spazioameno

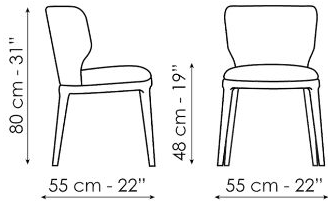


Elegante ed accogliente Joy è una sedia con gambe in legno che è sintesi di una ricerca materica che rappresenta i valori della tradizione rivisti in una chiave inedita e contemporanea. Il legno massello del basamento, elemento distintivo che racconta la durabilità tecnica di Joy e Miss Joy, contrasta con le linee morbide della seduta e dello schienale in tessuto e pelle.

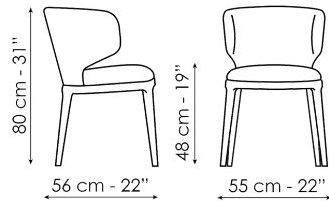
pelle avvolgente e dalla forma assicurante. Una collezione di sedute ricercate, confortevoli e dalla forte personalità che, anche grazie alla personalizzazione delle finiture e dei colori, sanno integrarsi alla perfezione sia in un ambiente residenziale che in ambito contract.



Scheda tecnica



Joy
Larghezza 55cm
Profondità 55cm
Altezza 80cm



Miss Joy
Larghezza 55cm
Profondità 56cm
Altezza 80cm

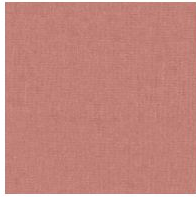
Finishes

RIVESTIMENTO

Tessuto - 900



Tessuto - Azimut
9B02



Tessuto - Azimut
9B08



Tessuto - Azimut
9B17



Tessuto - Azimut
9B22



Tessuto - Azimut
9B26



Tessuto - Azimut
9B36



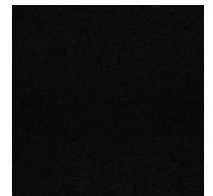
Tessuto - Azimut
9B39



Tessuto - Azimut
9B42



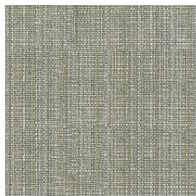
Tessuto - Azimut
9B44



Tessuto - Azimut
9B48



Fabric - Newco
9B65



Fabric - Newco
9B66



Fabric - Newco
9B67



Fabric - Newco
9B68



Fabric - Newco
9B69



Fabric - Newco
9B70



Fabric - Newco
9B71

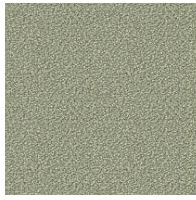


Fabric - Newco
9B72

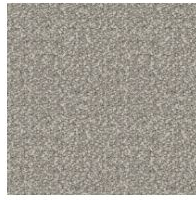
Tessuto - Must



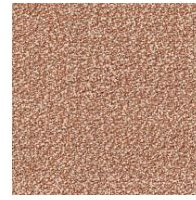
Tessuto - Boemian
MC40



Tessuto - Boemian
MC43



Tessuto - Boemian
MC46



Tessuto - Boemian
MC47



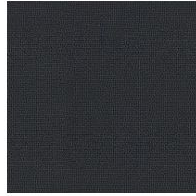
Tessuto - Boemian
MC49



Tessuto - Rico
MA02



Tessuto - Rico
MA04



Tessuto - Rico
MA07



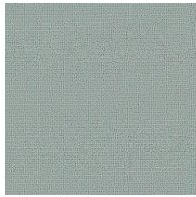
Tessuto - Rico
MA09



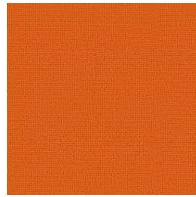
Tessuto - Rico
MA11



Tessuto - Rico
MA20



Tessuto - Rico
MA22



Tessuto - Rico
MC39



Tessuto - St. Moritz
MC60



Tessuto - St. Moritz
MC61



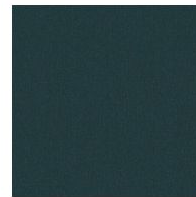
Tessuto - St. Moritz
MC62



Tessuto - St. Moritz
MC67



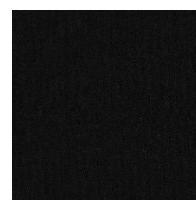
Tessuto - St. Moritz
MC69



Tessuto - St. Moritz
MC76



Tessuto - St. Moritz
MC81



Tessuto - St. Moritz
MC83

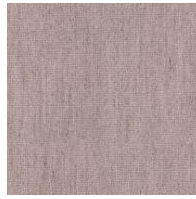
Tessuto - St. Moritz
MC85



Tessuto - Flora
MD30



Tessuto - Flora
MD31



Tessuto - Flora
MD32



Tessuto - Flora
MD34



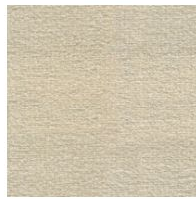
Tessuto - Flora
MD35



Tessuto - Flora
MD37



Tessuto - Flora
MD39



Fabric - Lucky
MD58



Fabric - Lucky
MD59



Fabric - Lucky
MD60



Fabric - Lucky
MD61

Tessuto - Special



Tessuto - Baia
SP45



Tessuto - Baia
SP48



Tessuto - Baia
SP50



Tessuto - Baia
SP51



Tessuto - Baia
SP52



Fabric - Jurga
SP53



Fabric - Jurga
SP54



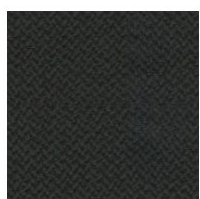
Fabric - Jurga
SP55



Fabric - Jurga
SP56



Fabric - Jurga
SP57



Fabric - Jurga
SP58

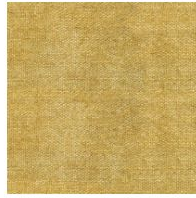
Tessuto - 800



Tessuto- Pastello
8D69



Fabric - Pastello
8D68



Fabric - Pastello
8D67



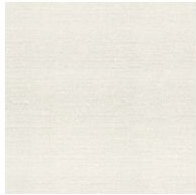
Fabric - Pastello
8D66



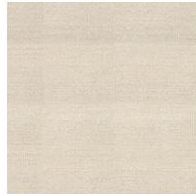
Fabric - Pastello
8D65



Fabric - Pastello
8D64



Fabric - Pastello
8D63



Fabric - Pastello
8D62



Fabric - Pastello
8D61



Fabric - Pastello
8D60



Fabric - Pastello
8D59



Fabric - Pastello
8D58



Fabric - Pastello
8D57



Fabric - Pastello
8D56



Fabric - Pastello
8D55



Fabric - Pastello
8D54



Fabric - Pastello
8D53



Fabric - Pastello
8D52

Tessuto - Class



Fabric - Hyle
EB55



Fabric - Hyle
EB56



Fabric - Hyle
EB57



Fabric - Hyle
EB58



Fabric - Hyle
EB59



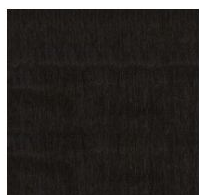
Fabric - Hyle
EB60



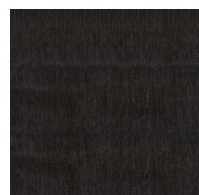
Fabric - Hyle
EB61



Fabric - Hyle
EB62



Fabric - Hyle
EB63



Fabric - Hyle
EB64

GAMBE

Legno



Legno massello
Frassino color noce



Legno massello
Frassino naturale



Legno massello
Frassino carbone

Materials fabrics leathers colors and finishes are approximate and may slightly differ from actual ones. You can find the complete collection of Bonaldo fabrics and leather on the website <https://www.bonaldabiz/>

