

BONALDO

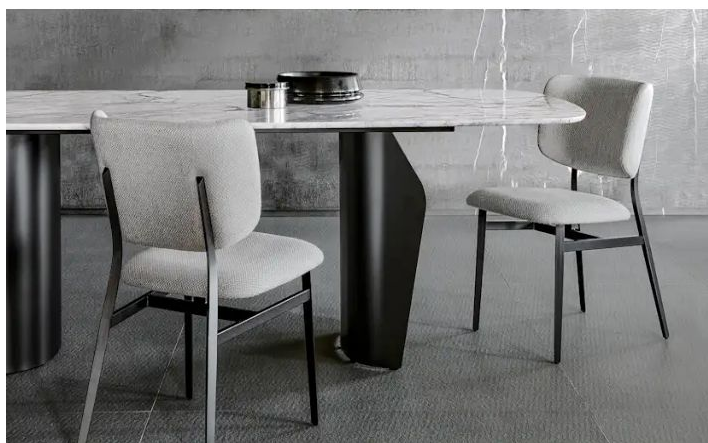
Noor

Designer: Dondoli e Pocci

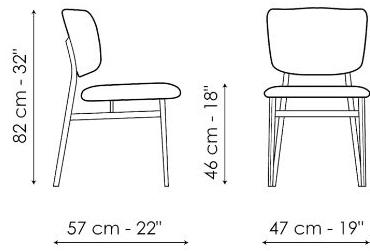


Linee delicate e ben definite per la sedia imbottita di design Noor, caratterizzata da una struttura a gambe in acciaio che combinano leggerezza e solidità. La seduta si avvicina alla struttura dello schienale senza però toccarla, dando l'impressione di "fluttuare".

Il design dello schienale, lievemente curvo ai lati, conferisce un'immagine insieme accogliente e confortevole. Lo schienale e la seduta sono imbottiti e rivestiti in pelle, ecopelle o tessuto.



Scheda tecnica



Noor

Larghezza 47cm

Profondità 57cm

Altezza 82cm

Finishes

RIVESTIMENTO

Tessuto - Must



Tessuto - Boemian
MC40



Tessuto - Boemian
MC43



Tessuto - Boemian
MC46



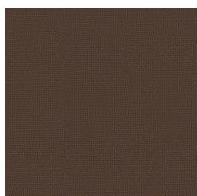
Tessuto - Boemian
MC47



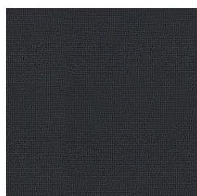
Tessuto - Boemian
MC49



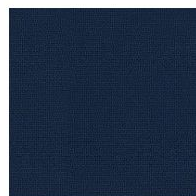
Tessuto - Rico
MA02



Tessuto - Rico
MA04



Tessuto - Rico
MA07



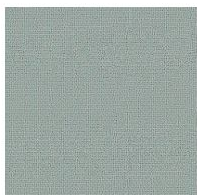
Tessuto - Rico
MA09



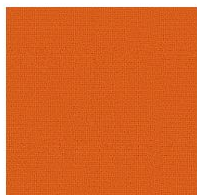
Tessuto - Rico
MA11



Tessuto - Rico
MA20



Tessuto - Rico
MA22



Tessuto - Rico
MC39



Tessuto - St. Moritz
MC60



Tessuto - St. Moritz
MC61



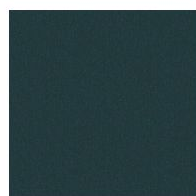
Tessuto - St. Moritz
MC62



Tessuto - St. Moritz
MC67



Tessuto - St. Moritz
MC69



Tessuto - St. Moritz
MC76



Tessuto - St. Moritz
MC81



Tessuto - St. Moritz
MC83



Tessuto - St. Moritz
MC85



Tessuto - Flora
MD30



Tessuto - Flora
MD31



Tessuto - Flora
MD32



Tessuto - Flora
MD34



Tessuto - Flora
MD35



Tessuto - Flora
MD37



Tessuto - Flora
MD39



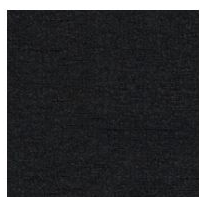
Fabric - Lucky
MD58



Fabric - Lucky
MD59



Fabric - Lucky
MD60



Fabric - Lucky
MD61

Tessuto - Special



Tessuto - Baia
SP45



Tessuto - Baia
SP48



Tessuto - Baia
SP50



Tessuto - Baia
SP51



Tessuto - Baia
SP52



Fabric - Jurga
SP53



Fabric - Jurga
SP54



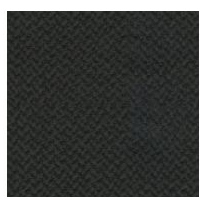
Fabric - Jurga
SP55



Fabric - Jurga
SP56



Fabric - Jurga
SP57



Fabric - Jurga
SP58

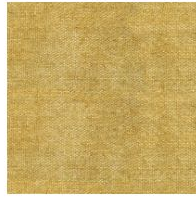
Tessuto - 800



Tessuto- Pastello
8D69



Fabric- Pastello
8D68



Fabric- Pastello
8D67



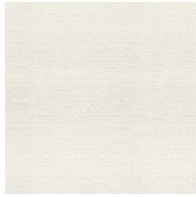
Fabric- Pastello
8D66



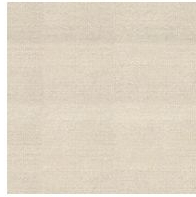
Fabric- Pastello
8D65



Fabric- Pastello
8D64



Fabric- Pastello
8D63



Fabric- Pastello
8D62



Fabric- Pastello
8D61



Fabric- Pastello
8D60



Fabric- Pastello
8D59



Fabric- Pastello
8D58



Fabric- Pastello
8D57



Fabric- Pastello
8D56



Fabric- Pastello
8D55



Fabric- Pastello
8D54



Fabric- Pastello
8D53

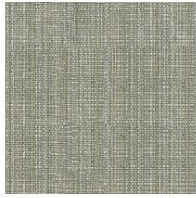


Fabric- Pastello
8D52

Tessuto - 900



Fabric - Newco
9B65



Fabric - Newco
9B66



Fabric - Newco
9B67



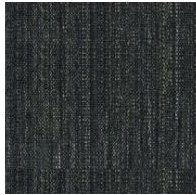
Fabric - Newco
9B68



Fabric - Newco
9B69



Fabric - Newco
9B70



Fabric - Newco
9B71



Fabric - Newco
9B72

Tessuto - Class



Fabric - Hyle
EB55



Fabric - Hyle
EB56



Fabric - Hyle
EB57



Fabric - Hyle
EB58



Fabric - Hyle
EB59



Fabric - Hyle
EB60



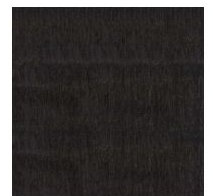
Fabric - Hyle
EB61



Fabric - Hyle
EB62



Fabric - Hyle
EB63



Fabric - Hyle
EB64

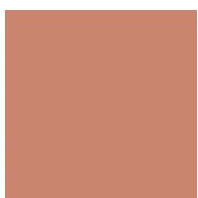
GAMBE

MetalloSpecial



Metallofinitura
Brunito

MetalloPlus



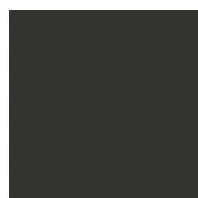
Metalloverniciato
Rame opaco



Metalloverniciato
Ottone opaco



Metalloverniciato
Bronzo opaco

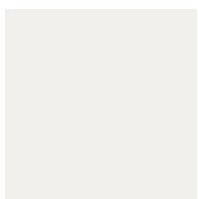


Metalloverniciato
Piombo opaco



Metalloverniciato
Oro perlato opaco

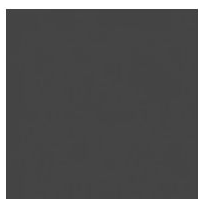
Metallo



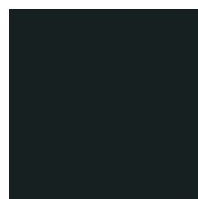
Metalloverniciato
Bianco opaco



Metalloverniciato
Marrone opaco



Metalloverniciato
Supreme anthracite



Metalloverniciato
Nero opaco



Metalloverniciato
Tortora opaco

Materials fabrics leathers colors and finishes are approximate and may slightly differ from actual ones. You can find the complete collection of Bonaldo fabrics and leathers on the website <https://www.bonaldabiz/>